

ACHIEVING EQUITY AND QUALITY: 11 SIMPLE RULES TO BUILD THRIVING COMMUNITIES

NICHOLE PARKS • LAUREN CARLISLE • JUDY JABLON



1

It's hard to be what you
can't see.

— Marian Wright Edelman

Equity for every child must
begin with equity for **all** the
adults in their lives.



2

LET'S EXPLORE

1. An accessible framework for early learning quality.
2. How to use the 11 Simple Rules to have conversations about quality that include all the important adults in the young child's life.
3. How Wyoming uses the 11 Simple Rules to collaborate about quality.



3



4



5



6



7



8



9

COHERENCE

10

COHERENT PATH TO QUALITY



11

11 SIMPLE RULES FOR THRIVING COMMUNITIES

12

RELATIONSHIPS & INTERACTIONS



13

TWO-WAY

What does it mean?

- Mutuality and reciprocity

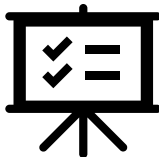
Why does it matter?

- Both people feel seen and heard



14

Poll

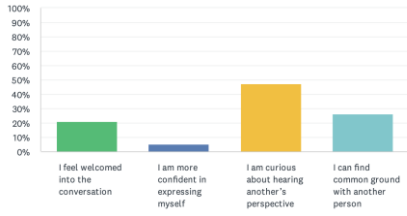


If you can't see the slides after the poll, click the flower in the task bar at the **bottom of your screen.**



15

WHAT DO OTHERS THINK ABOUT TWO-WAY RELATIONSHIPS?



16



17

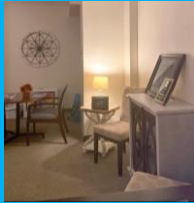
STRATEGY #1

- Elicit the group's wisdom
 - What do you see that exemplifies two-way?
- Build shared understanding of the characteristics of the simple rule



18

EMOTIONAL & PHYSICAL ENVIRONMENT



19

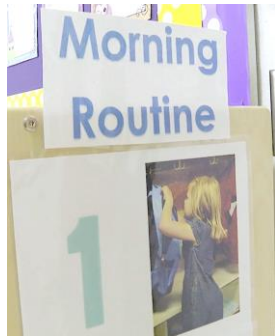
RESPECTFUL

What does it mean?

- It's inclusive and everyone belongs

Why does it matter?

- Each person is welcomed, represented, respected, and supported



20

Poll

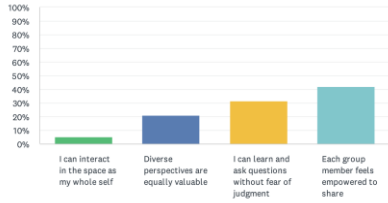


If you can't see the slides after the poll, click the flower in the task bar at the **bottom of your screen.**



21

WHAT DO OTHERS THINK ABOUT RESPECTFUL ENVIRONMENTS?



22



23

STRATEGY #2

- Send text message
- Invite a hunt for quality
- Share, compare, and discuss photos

A respectful environment welcomes us into the space and tells us we are seen and heard.

Hunt for quality: Prepare for our upcoming calls this week and next.

Look for examples of respectful environments.

24

LEARNING EXPERIENCES



25

EXPLORATORY

What does it mean?

- Activates curiosity and encourages investigation

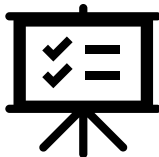
Why does it matter?

- Each person can bring their own unique interests and questions to the situation



26

Poll



If you can't see the slides after the poll, click the flower in the task bar at the **bottom of your screen.**



27

WHAT DO OTHERS THINK ABOUT EXPLORATORY LEARNING EXPERIENCES?



28



29



30

STRATEGY #3

Create local resources



31

Seven horizontal lines for writing notes.

Case Study--Wyoming



32

Seven horizontal lines for writing notes.

Case Study--Wyoming

“Don't tell me your values. Show me how you gather, and I'll tell you your values.”

-Priya Parker



33

Seven horizontal lines for writing notes.

Case Study--Wyoming

Experienced the Framework



34

Case Study--Wyoming



Experienced the Framework

Transforming our Communities

Discovered Alignment with Values



35

Case Study--Wyoming

Experienced the Framework

Transforming our Communities

Discovered Alignment with Values



36

Case Study--Wyoming



37

STRATEGIES: RECAP

1. Use photos to elicit the group's wisdom and building consensus.
2. Use text messages to invite a "hunt" for quality. Host a conversation to share and compare.
3. Create a local resource.

38

YOUR COMMITMENT

11 Simple Rules for a Thriving Community

- *What are you curious to explore?*



39



Thanks for coming!

Connect with us on Facebook:
[Facebook.com/LeadingForChildren](https://www.facebook.com/LeadingForChildren)

Sign up for our mailing list:
[Leadingforchildren.org/Contact](https://www.leadingforchildren.org/Contact)



